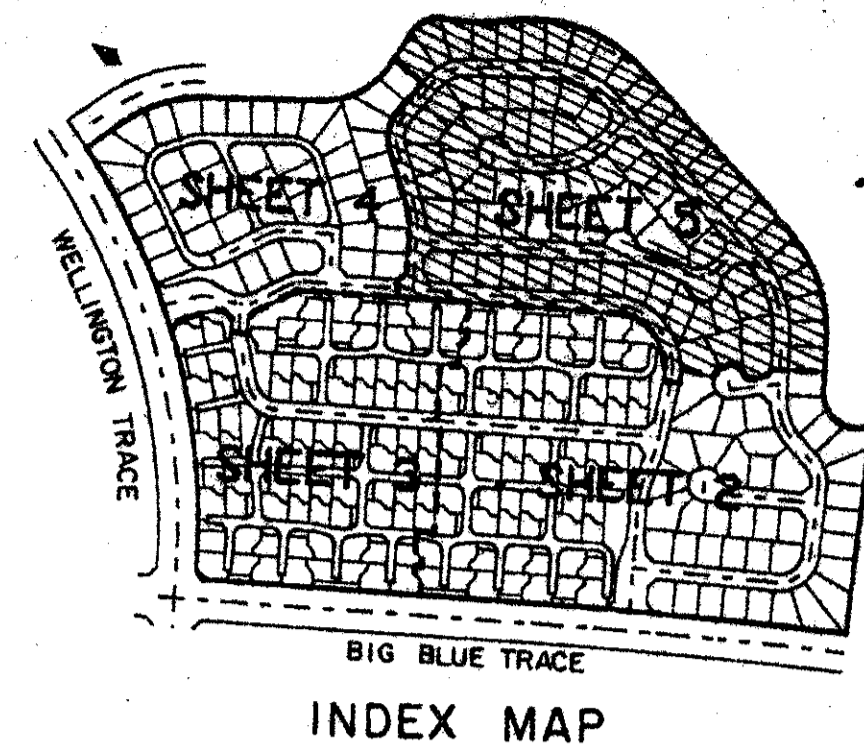
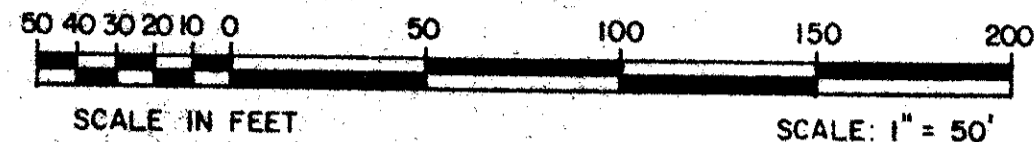


LAKE WELLINGTON

(DRAINAGE EASEMENT PER O.R.B. 2452, PGS. 250-266)

EMERALD FOREST OF WELLINGTON - P.U.D.

IN PART OF SECTIONS 3, 4, 9 AND 10, TWP. 44 S., RGE. 41 E.
PALM BEACH COUNTY, FLORIDA.
IN 5 SHEETS SHEET NO. 5
JANUARY 1987



181



- NOTES**
- DENOTES PERMANENT REFERENCE MONUMENT
 - DENOTES PERMANENT CONTROL POINT
- ALL BEARINGS SHOWN HEREON ARE RELATIVE TO AN ASSUMED MERIDIAN OF SECTION THROUGHOUT WELLINGTON - P.U.D. THE WEST LINE OF SECTION 10-44-41 IS ASSUMED TO BEAR NORTH 01°10'24" EAST.
- BUILDING SETBACK LINES SHALL BE AS REQUIRED BY PALM BEACH COUNTY ZONING REGULATIONS.
- NO BUILDINGS OR ANY KIND OF CONSTRUCTION SHALL BE PLACED ON UTILITY, DRAINAGE, OR WATER AND SEWER EASEMENTS.
- NO STRUCTURES, TREES OR SHRUBS SHALL BE PLACED IN THE UTILITY AND MAINTENANCE EASEMENTS.
- APPROVAL OF LANDSCAPING ON UTILITY EASEMENTS SHALL BE ONLY WITH THE APPROVAL OF ALL UTILITIES OCCUPYING SAME.
- UTILITY EASEMENTS ARE FOR PUBLIC UTILITIES, WATER AND SEWER UNLESS OTHERWISE NOTED.
- WHERE DRAINAGE EASEMENTS AND UTILITY EASEMENTS CROSS, DRAINAGE EASEMENTS SHALL TAKE PRECEDENCE.
- PARCELS A-1 THROUGH A-37 AND B-1 THROUGH B-17 AS SHOWN HEREON ARE FOR OPEN SPACE/COMMON, DRAINAGE, UTILITY, WATER, AND SEWER PURPOSES.
- PARCEL B-18 AS SHOWN HEREON IS FOR OPEN SPACE/COMMON, RECREATION, DRAINAGE, UTILITY, WATER, AND SEWER PURPOSES.
- DEDICATIONS TO COUNTRY HOMES AT EMERALD FOREST HOMEOWNERS ASSOCIATION, MANOR HOMES AT EMERALD FOREST HOMEOWNERS ASSOCIATION, AND EMERALD FOREST ROAD ASSOCIATION, ARE NOT INTENDED TO CREATE ANY RIGHTS IN FAVOR OF THE GENERAL PUBLIC.

3,4,9,10/44/41

SUBDIVISION	Emerald Forest
BOOK	56
FLOOD ZONE	B
QUAD	3462
SE	3462
PUD NAME	of Wellington - PUD

PAGE 181
FLOOD MAP #100B
ZONING
ZIP CODE 33414

JAZ 727

THIS INSTRUMENT WAS PREPARED BY:
PAUL J. FOTORNY OF DAILEY-FOTORNY, INC.
5050 TENTH AVENUE NORTH, SUITE B
LAKE WORTH, FLORIDA 33463

EMERALD FOREST

ADD. BY [Signature]
CHECKED BY [Signature]

Dailey-Fotorny, inc.
land surveyors, planners, engineers

56/181

0332-017

5/24/6
Collect
Pet. 86-32
AR/PUD

PLAN-HOLD CORPORATION • IRVINE, CALIFORNIA
 REPRODUCED BY NUMBER 07534
 SECTION 10 OF PART OF THE LAKE